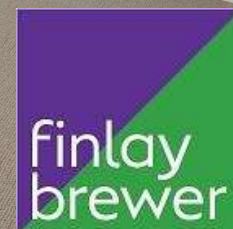




Edith Road W14



Edith Road W14

4 BEDROOMS

RECEPTION / DINING ROOM

KITCHEN

BATHROOM

GUEST CLOAKROOM

EPC RATING: C 71

COUNCIL TAX BAND F

LEASE LENGTH: 975 YRS APX

SERVICE CHARGE: £3,200 PA APX

PEPPERCORN GROUND RENT

A fabulous and lateral 3 bedroom apartment which is situated on the first floor of a handsome red brick Victorian Mansion block. The contemporary kitchen has an abundance of storage, built in appliances and matt black cabinets. The generous reception room has 3 large sash windows, built-in shelves with dwarf cupboards below and a feature fireplace. The 2nd reception is currently arranged for dining but could also be used as a fourth bedroom if required. There are 3 double bedrooms, a family bathroom and a separate guest cloak room. This well-presented apartment of approximately 1219 sq ft is conveniently located for transport links at Barons Court and West Kensington and is within walking distance of the amazing Olympia Development which offers an array of independent restaurants, theatre, and concert space!

PRICE GUIDE £1,100,000
LEASEHOLD

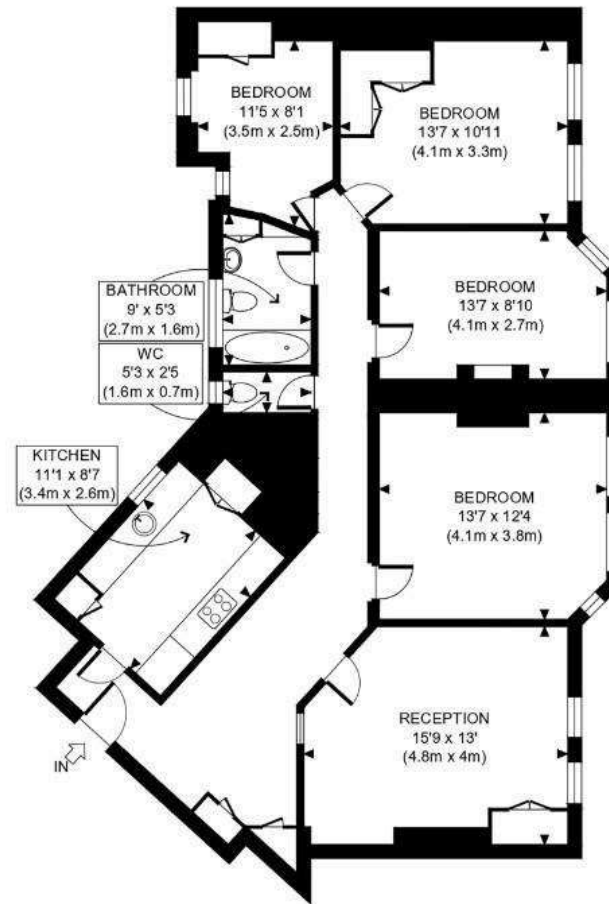
SUBJECT TO CONTRACT







AURIOL MANSIONS, W14



FIRST FLOOR
GROSS INTERNAL
FLOOR AREA 1219 SQ FT

APPROX. GROSS INTERNAL FLOOR AREA: 1219 SQ FT/ 113 SQM

PROPERTY PHOTO PLANS CO.UK
ONE STOP SHOP FOR PROPERTY MARKETING